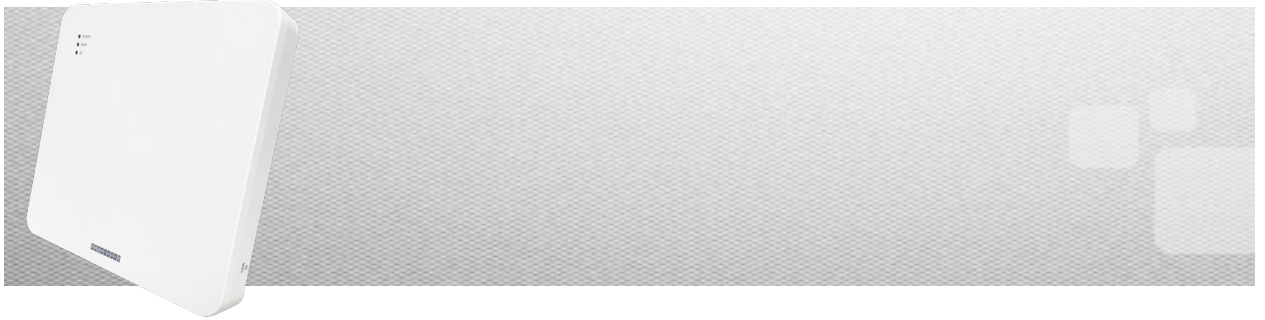


EAP101

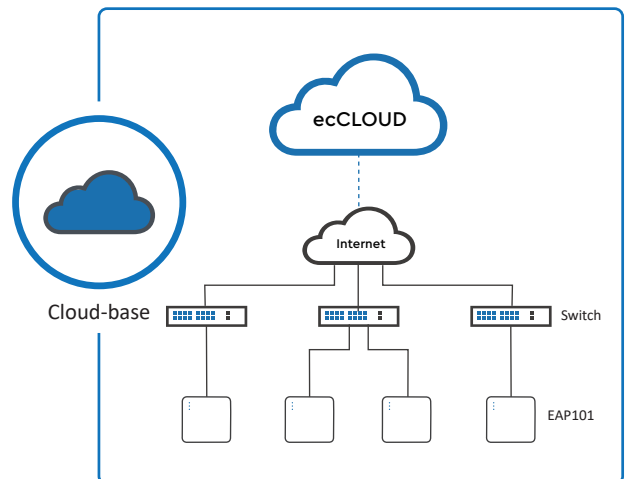
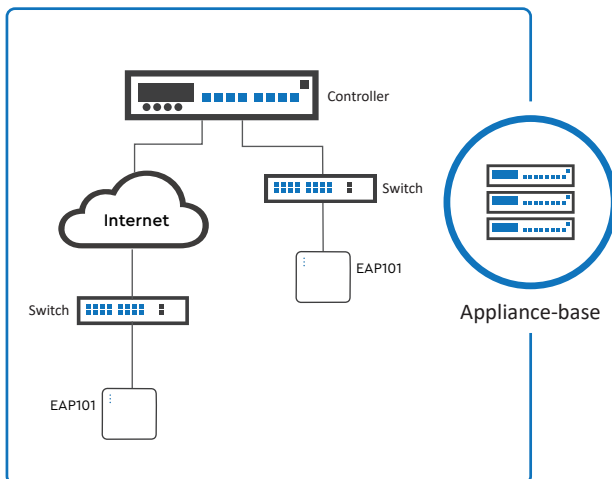
INDOOR WI-FI 6 ACCESS POINT



INTRODUCTION

EAP101 is an enterprise-grade, concurrent dual-band Wi-Fi 6 indoor access point. EAP101 supports 2x2:2 uplink and downlink MU-MIMO between the AP and multiple clients, with up to 1.7Gbps aggregated data rate. EAP101 is equipped with Bluetooth Low Energy (BLE) radio and ZigBee enabling value-added applications such as iBeacon, presence.

EAP101 can be operated as standalone mode or managed by Edgecore ecCLOUD and EWS-Series controller.



HIGHLIGHTS

- Concurrent Dual-Band 2.4 GHz & 5 GHz
- 802.11ax 2x2:2 UL MU-MIMO supporting up to 1.7 Gbps data rate
- Support up to 32 ESSIDs.
- Enterprise-Grade Wireless Security
- Bluetooth Low Energy (BLE)
- ZigBee
- 802.3at Power over Ethernet (PoE)

SPECIFICATIONS

PHYSICAL	
Power	<ul style="list-style-type: none"> DC Input: 12V / 2.0A (Power adapter included) PoE: 802.3at compliant (PoE injector not included)
Dimensions (L x W x H)	<ul style="list-style-type: none"> 19.5 cm x 19.5 cm x 3.9 cm
Weight	<ul style="list-style-type: none"> 0.65 kg (1.44 lbs)
Interfaces	<ul style="list-style-type: none"> Uplink: 1 x 10/100/1000/2.5GBase-T Ethernet, Auto MDIX, RJ-45 with 802.3at PoE LAN: 2 x 10/100/1000Base-T Ethernet, Auto MDIX, RJ-45 Console: 1 x RJ-45 Port USB: 1 x USB 2.0 Port
LED Indicator	<ul style="list-style-type: none"> 2.4G-WiFi / 5G-WiFi / Power
Buttons	<ul style="list-style-type: none"> Restart / Reset
Environmental Conditions	<ul style="list-style-type: none"> Operating Temperature: 0°C (32°F) to 50°C (122°F) Operating Humidity: 5% to 95% non-condensing
Power Consumption	<ul style="list-style-type: none"> 22.4W max.
Antenna	<ul style="list-style-type: none"> Type: 3 x Built-in antenna (2 x 2.4 GHz & 5 GHz, 1 x Bluetooth Low Energy) Gain: 4.8 dBi (2.4 GHz), 6 dBi (5 GHz), 4.6 dBi (BLE)
Mounting	<ul style="list-style-type: none"> Wall/Ceiling/T-bar mount (Mounting kit included)
Anti-theft	<ul style="list-style-type: none"> 1 x Kensington lock slot
WI-FI	
Standards	<ul style="list-style-type: none"> 802.11ax (Wi-Fi 6) Concurrent dual-band 2.4 & 5 GHz
Supported Data Rates	<ul style="list-style-type: none"> 802.11b: 1, 2, 5.5, 11 Mbps 802.11a/g: 6, 9, 12, 18, 24, 36, 48, 54 Mbps 802.11n: 6.5 – 300 Mbps (20 / 40 MHz) 802.11ac: 6.5 – 867 Mbps (20 / 40 / 80 MHz) 802.11ax: 3.6 – 574 Mbps (2.4 GHz, 20 / 40 MHz) 802.11ax: 3.6 – 1200 Mbps (5 GHz, 20 / 40 / 80 MHz)
Radio Chains	<ul style="list-style-type: none"> 2 x 2
Spatial Streams	<ul style="list-style-type: none"> 2; MU-MIMO support
Aggregate Conducted Transmit Power*1	<ul style="list-style-type: none"> 2.4 GHz: Up to 26 dBm*2 5 GHz: Up to 26 dBm*2
Channelization	<ul style="list-style-type: none"> 2.4 GHz: 20 / 40 MHz 5 GHz: 20 / 40 / 80MHz
Frequency Range	<ul style="list-style-type: none"> 2.400 – 2.483 GHz 5.150 – 5.850 GHz
Operating Channels	<ul style="list-style-type: none"> 2.4 GHz: 1 – 11 (US), 1 – 13 (Europe), 1 – 13 (Japan) 5 GHz*3: 36 – 165 (US), 36 – 140 (Europe), 36 – 144 (Japan)
ESSIDs	<ul style="list-style-type: none"> Up to 16 per radio (32 total)
Certifications	<ul style="list-style-type: none"> FCC, CE, LVD, NCC, BSMI, VCCI, JATE, TELEC, IC, C-Tick
PERFORMANCE	
Physical Data Rate	<ul style="list-style-type: none"> Up to 574 Mbps (2.4 GHz) Up to 1200 Mbps (5 GHz)

*1: RF output power aggregates across MIMO chains and doesn't contain antenna gain

*2: Maximum power is limited by local regulatory requirements

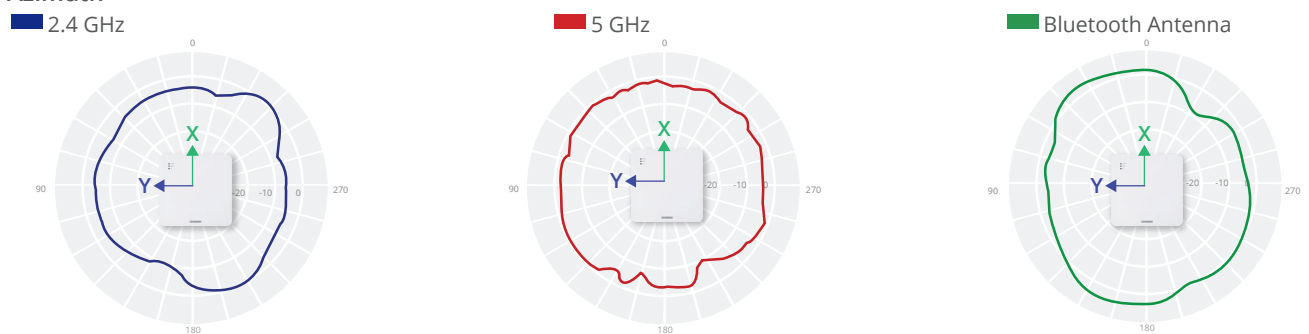
*3: Some channels are restricted by local regulatory and certifications.

FEATURES

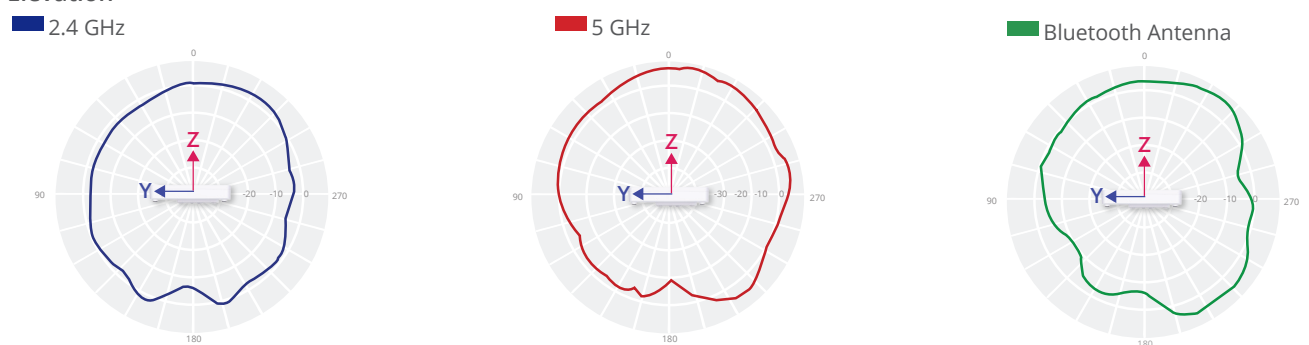
Wireless	<ul style="list-style-type: none"> ♦ 802.11 k/r ♦ Orthogonal Frequency Division Multiple Access (OFDMA) ♦ Client Isolation ♦ Open Mesh
Network	<ul style="list-style-type: none"> ♦ Spanning Tree Protocol (STP) ♦ Dynamic Host Configuration Protocol (DHCP) ♦ 802.1q ♦ Access Control List (ACL) ♦ Network Address Translation (NAT) ♦ Dynamic VLAN ♦ Link Layer Discovery Protocol (LLDP)
Security	<ul style="list-style-type: none"> ♦ WPA-Personal (AES) ♦ WPA-Enterprise (AES) ♦ WPA2-Personal (AES) ♦ WPA2-Enterprise (AES) ♦ WPA3-Personal (AES) ♦ WPA3-Personal Transition (AES) ♦ WPA3-Enterprise (AES) ♦ WPA3-Enterprise transition (AES) ♦ MAC Address Authentication
Maintenance	<ul style="list-style-type: none"> ♦ Network Time Protocol (NTP) ♦ Standalone ♦ Management by ecCLOUD ♦ Management by EWS-Series Controller (Complete tunnel) ♦ SSH ♦ QR Code Onboarding ♦ SNMP v2c ♦ Remote Syslog
QoS	<ul style="list-style-type: none"> ♦ RSSI Threshold (Optimal Client Filtering)
Others	<ul style="list-style-type: none"> ♦ iBeacon

SIGNAL COVERAGE PATTERN

Azimuth



Elevation



RECEIVE SENSITIVITY		
Operating Mode	Data Rate	Receive Sensitivity (dBm)
802.11b	1 Mbps	-95
	11 Mbps	-87
802.11a	6 Mbps	-89
	54 Mbps	-72
802.11g	6 Mbps	-90
	54 Mbps	-73
802.11n (2.4 GHz/HT20)	MCS0	-90
	MCS7	-72
802.11n (2.4 GHz/HT40)	MCS0	-86
	MCS7	-70
802.11n (5 GHz/HT20)	MCS0	-89
	MCS7	-71
802.11n (5 GHz/HT40)	MCS0	-86
	MCS7	-70
802.11ac (VHT20)	MCS0	-90
	MCS8	-69
802.11ac (VHT40)	MCS0	-86
	MCS9	-64
802.11ac (VHT80)	MCS0	-84
	MCS9	-60
802.11ax (2.4 GHz/HE20)	MCS0	-90
	MCS11	-62
802.11ax (2.4 GHz/HE40)	MCS0	-86
	MCS11	-59
802.11ax (5 GHz/HE20)	MCS0	-89
	MCS11	-60
802.11ax (5 GHz/HE40)	MCS0	-86
	MCS11	-58
802.11ax (5 GHz/HE80)	MCS0	-84
	MCS11	-56